

Wildlife in Common Survey

Site Name: Martham Smee Land, off Common Rd

Parish: Martham

Grid reference: TG 437179

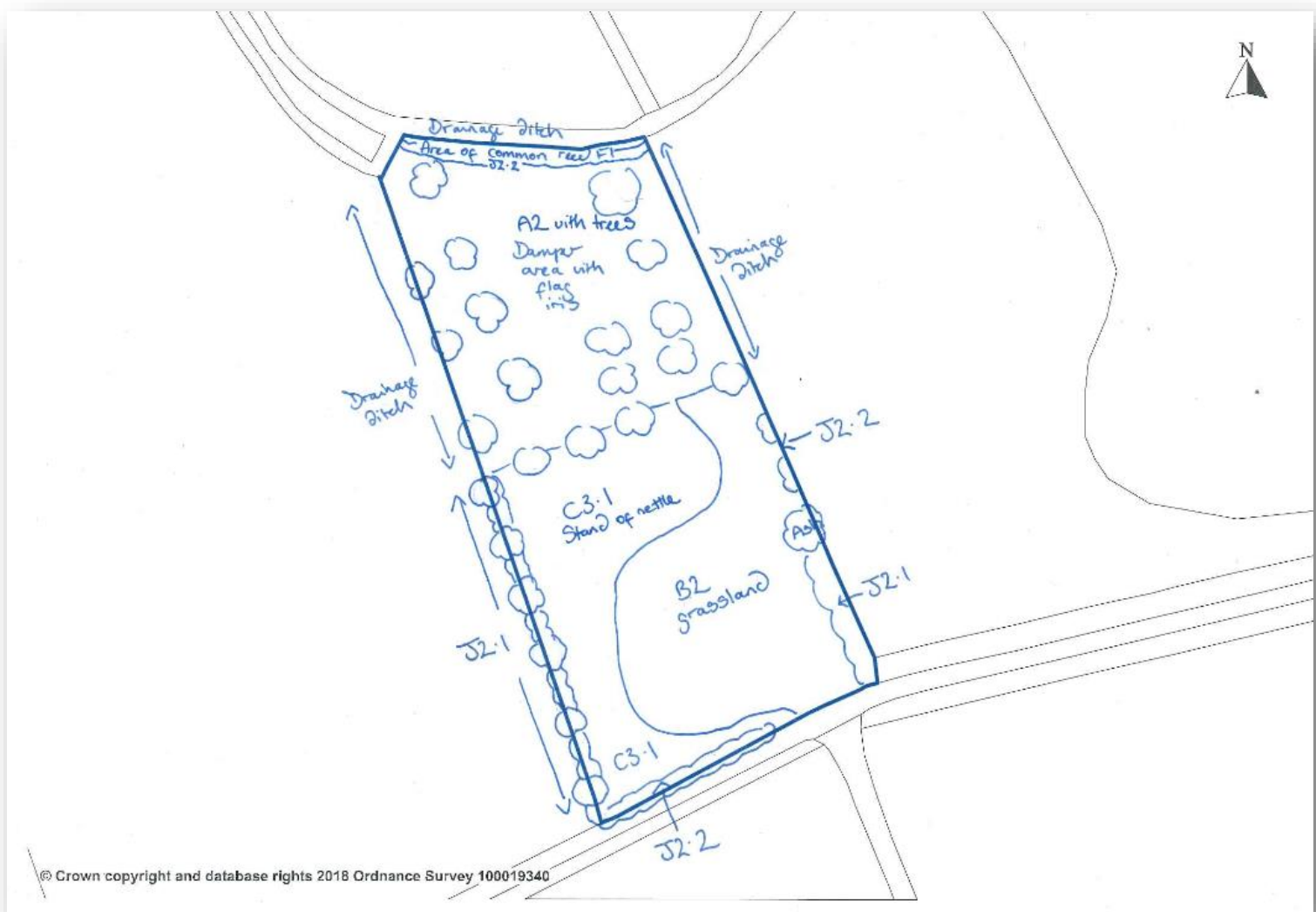
Area:

District: Great Yarmouth

Survey date: 12/06/18, 22/6/18, 10/7/18, 19/7/18, 31/7/18

Annotated habitat map if available:

Please show boundary of area surveyed clearly, different habitats and key features of interest such as veteran trees, ditches, species-rich areas etc



Habitat description:

Please provide a brief description of the habitats with key species/ provide target notes for habitat map.

Small, rectangular, flat site approximately 1.5 miles west of Martham, off a footpath known as Common Road. The southern half of the site is fenced, and there is a wide, water-filled drainage ditch to the immediate north.

To the south and south-east there is an area of recently mown grass, with occasional coppiced hazel (*Corylus avellana*) and a couple of oak trees (*Quercus robur*). Tree and hedgerow planting has taken place here in recent years.

Grassland species include oxeye daisy (*Lecanthemum vulgare*), creeping bent (*Agrostis stolonifera*), hemlock (*Conium maculatum*), hogweed (*Heracleum sphondyleum*), cow parsley (*Anthriscus sylvestris*), broad-leaved dock (*Rumex obtusifolius*), Yorkshire fog (*Holcus lanatus*), creeping buttercup (*Ranunculus repens*) and common daisy (*Bellis perennis*).

A dense, impenetrable stand of nettle (*Urtica dioica*) with occasional hazel, elder (*Sambucus nigra*) and oak make up the western part of this area.

The northern half of the common is more wooded with scrub and trees including oak, birch (*Betula pendula*), willow (*Salix* sp.), elder and hawthorn (*Crataegus monogyna*). This area is influenced by the water-filled drainage ditch along the north boundary, with common reed (*Phragmites australis*) and yellow flag iris (*Iris pseudacorus*). There are also damp ditches to the east and west of the northern part of the common.

The southern boundary is a sparse hedge of hawthorn, elder, oak and blackthorn (*Prunus spinosa*) with a dense understorey of mainly nettle and cleavers (*Galium aparine*). The eastern boundary is a dense mature hedge of hawthorn, elder and blackthorn with hop (*Humulus lupulus*) intertwining with cleavers, nettle, hedge woundwort (*Stachys sylvatica*) and dog rose (*Rosa canina* sp.). The hedge becomes sparser to the north.

The north boundary has a fence and sparse hedge of elder and hawthorn with a few mature oaks and some nettles. The western boundary is a hawthorn hedge with occasional mature oak and nettle.

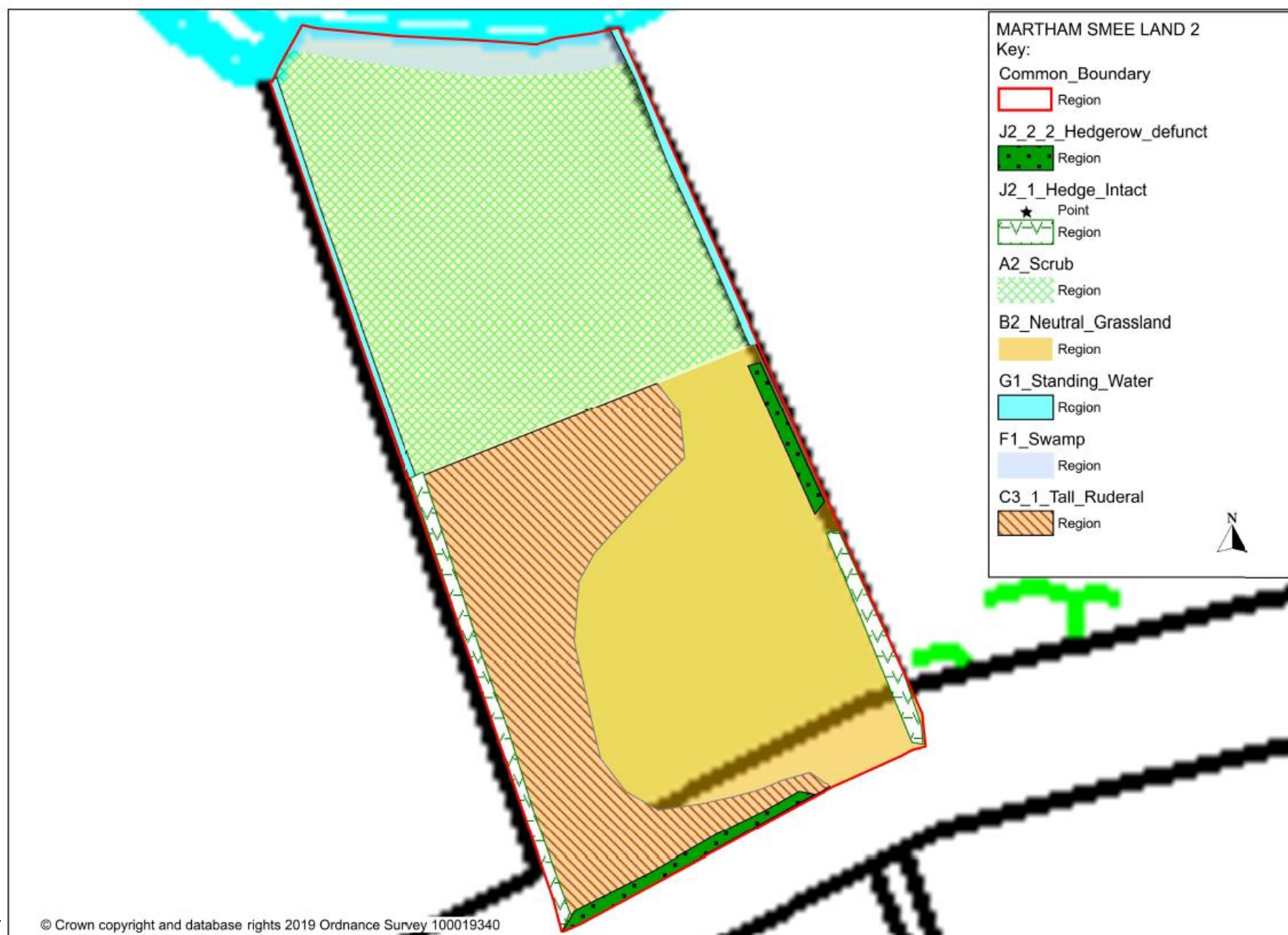
Other species across the common include remote sedge (*Carex remota*), red currant (*Ribes rubrum*), marsh thistle (*Cirsium palustre*), great willowherb (*Epilobium hirsutum*), enchanter's nightshade (*Circaea lutetiana*) and broad buckler fern (*Dryopteris dilatata*).

Other notable species:

Include non-plant species eg turtle dove/barn owl/dingy skipper

Purple hairstreak
Hedgehog
Norfolk hawk

Habitat Map:



Adjacent habitats/potential buffer zones & linkage to other sites:

Is the site next to another CWS/SSSI? Is there similar habitat adjacent or is the site surrounded by agricultural land?

The common is surrounded by agricultural land, and an area of wet meadow and scrub grading into deciduous woodland with drainage ditches to the north.

Is the site in positive conservation management? Partly. (Please give details if necessary).

Please give details of management if possible eg is it grazed/cut for hay/coppiced/no management? Is the site in a stewardship scheme/got a management plan etc

This is one of the two surviving Smees in Martham managed by the parish council. It became a conservation area in 2009/2010 when the Broads Authority Sustainable Development Fund Project awarded £870 to The Parish Council towards planting trees and a hedge. The information board at the entrance to the site states that: "Old wire and rubbish has been removed, a mixed hedge provided and over 130 native trees have been planted including oak, hawthorn, alder, crab apple, hazel and holly. Rotten wood and vegetation has been used to create a bug habitat pile. The existing trees around the site have been crown raised. A short path and woodland benches have been provided."

The southern grassland had been kept cut short in 2018, but the path through the nettle bed remained uncut at the time of surveying.

Images by Steve Pinnington



Open grassland with coppiced hazels – South-east of Smee (Steve Pinnington)





Path running between wet carr woodland and meadow area
(Steve Pinnington)

Nettle patch in the west corner
(Steve Pinnington)



Interpretation board on the main gate into the smee land
(Steve Pinnington)

PLANT LIST

Site Name: Martham Smee Land (off Common Road)

Date of survey: 12/06/18, 22/6/18, 10/7/18, 19/7/18,31/7/18

Surveyor: Steve Pinnington, Yvonne Mynett and Peter Cawley

***Comments – please include DAFOR for plants of note and exact grid reference (6 figure)/ location for rare/scarce species**

Common name	Scientific name	Comments/Location
Ash	<i>Fraxinus excelsior</i>	
Alder	<i>Alnus glutinosa</i>	
Bent-grass, Creeping	<i>Agrostis stolonifera</i>	
Black Medic	<i>Medicago lupulina</i>	
Blackthorn	<i>Prunus spinosa</i>	
Bramble agg.	<i>Rubus fruticosus</i> agg.	
Brome, Barren	<i>Bromus sterilis</i>	
Burdock, Lesser	<i>Arctium minus</i>	
Buttercup, Creeping	<i>Ranunculus repens</i>	
Campion, Red	<i>Silene dioica</i>	
Cleavers	<i>Galium aparine</i>	
Cocksfoot	<i>Dactylis glomerata</i>	
Common Holly	<i>Ilex aquifolium</i>	
Honeysuckle, Common	<i>Lonicera periclymenum</i>	
Common Hop	<i>Humulus lupulus</i>	
Common Ivy	<i>Hedera helix</i>	
Common Nettle	<i>Urtica dioica</i>	
Cow Parsley	<i>Anthriscus sylvestris</i>	
Cranesbill, Cut-leaved	<i>Geranium dissectum</i>	
Currant, Red	<i>Ribes rubrum</i>	
Daisy, Common	<i>Bellis perennis</i>	
Dandelion agg.	<i>Taraxacum</i> agg.	
Dead-nettle, Red	<i>Lamium purpureum</i>	
Dead-nettle, White	<i>Lamium album</i>	
Dock, Broad-leaved	<i>Rumex obtusifolius</i>	
Dock, Wood	<i>Rumex sanguineus</i>	
Dog Rose sp.	<i>Rosa canina</i> sp.	
Elder	<i>Sambucus nigra</i>	
Enchanter's Nightshade	<i>Circaea lutetiana</i>	
Fern, Broad Buckler	<i>Dryopteris dilatata</i>	
Ground-ivy	<i>Glechoma hederacea</i>	
Hawthorn	<i>Crataegus monogyna</i>	
Hazel	<i>Corylus avellana</i>	
Hemlock	<i>Conium maculatum</i>	
Hogweed	<i>Heracleum sphondylium</i>	
Horehound, Black	<i>Ballota nigra</i>	
Hornbeam	<i>Carpinus betulus</i>	
Iris, Yellow Flag	<i>Iris pseudacorus</i>	
Mallow, Common	<i>Malva sylvestris</i>	
Chickweed	<i>Cerastium fontanum</i>	
Nightshade, Black	<i>Solanum nigrum</i>	
Oak, Common	<i>Quercus robur</i>	
Oat-grass, False	<i>Arrhenatherum elatius</i>	

Common name	Scientific name	Comments/Location
Ox-eye Daisy	<i>Leucanthemum vulgare</i>	
Plantain, Greater	<i>Plantago major</i>	
Plantain, Ribwort	<i>Plantago lanceolata</i>	
Scarlet Pimpernel	<i>Anagallis arvensis</i>	
Sedge, Remote	<i>Carex remota</i>	
Sow-thistle Prickly	<i>Sonchus asper</i>	
Thistle, Marsh	<i>Cirsium palustre</i>	
Thistle, Spear	<i>Cirsium vulgare</i>	
Willowherb, Great	<i>Epilobium hirsutum</i>	
Woundwort, Hedge	<i>Stachys sylvatica</i>	
Yorkshire Fog	<i>Holcus lanatus</i>	

Other species:

Date Seen	Species Name		Comments
12/6/18	Deer sp.	<i>Cervidae</i> sp.	Dung
	Blackcap	<i>Sylvia atricapilla</i>	Heard
	Marsh Harrier	<i>Circus aeruginosus</i>	Overhead
	Robin	<i>Erithacus rubecula</i>	
	Swallow	<i>Hirundo rustica</i>	Overhead
	Common Carder Bee	<i>Bombus pascuorum</i>	
	Damselfly, Blue-tailed	<i>Ischnura elegans</i>	
	Marmalade Hoverfly	<i>Episyrphus balteatus</i>	
	Nettle Tap Moth	<i>Anthophila fabriciana</i>	
	Yellow-barred Longhorn Moth	<i>Nemophora degeerella</i>	
22/6/18	Black-tailed Skimmer	<i>Orthetrum cancellatum</i>	
	Damselfly, Azure	<i>Coenagrion puella</i>	
	Hawker, Norfolk	<i>Aeshna isocetes</i>	
	Honey Bee	<i>Apis mellifera</i>	
10/7/18	Blackcap	<i>Sylvia atricapilla</i>	Heard
		<i>Chrysogaster solstitialis</i> (Hoverfly)	
		<i>Tephritis cometa</i> (Fly)	
	Comma	<i>Polygonia c-album</i>	
	Common Marble Moth	<i>Celypha lacunana</i>	
	Common Red Soldier Beetle	<i>Rhagonycha fulva</i>	
	Little Snipefly	<i>Chrysopilus asiliformis</i>	
	Red Admiral	<i>Vanessa atalanta</i>	
	Ringlet	<i>Aphantopus hyperantus</i>	
	Small Magpie Moth	<i>Anania hortulata</i>	
	Southern Hawker	<i>Aeshna cyanea</i>	
	Speckled Bush Cricket	<i>Leptophyes punctatissima</i>	
19/7/18	Hedgehog	<i>Erinaceus europaeus</i>	Droppings
	Wood Pigeon	<i>Columba palumbus</i>	
		<i>Chrysogaster solstitialis</i>	Hoverfly
	Common Wasp	<i>Vespula vulgaris</i>	

Date Seen	Species Name		Comments
	Orange-tailed Mining-bee	<i>Andrena haemorrhoa</i>	
	Peacock Butterfly	<i>Aglais io</i>	
	Pellucid Hoverfly	<i>Volucella pellucens</i>	
	Ruddy Darter	<i>Sympetrum sanguineum</i>	
	Thick-thighed Flower Beetle	<i>Oedemera nobilis</i>	
	Tree Bee	<i>Bombus hypnorum</i>	
	European Mole	<i>Talpa europaea</i>	Molehills
	Grey Squirrel	<i>Sciurus carolinensis</i>	
	Sparrowhawk	<i>Accipiter nisus</i>	
	Gatekeeper	<i>Pyronia tithonus</i>	
	Mother-of-Pearl Moth	<i>Pleuroptya ruralis</i>	
31/7/18	Square-spot Deerfly	<i>Chrysops viduatus</i>	
	Buff-tailed Bumble Bee (Queen)	<i>Bombus terrestris</i>	
	European Hornet	<i>Vespa crabro</i>	
21/8/18	Purple Hairstreak	<i>Neozephyrus quercus</i>	
	Long- Winged Conehead	<i>Conocephalus discolor</i>	
	Common Frog	<i>Rana temporaria</i>	
	Muntjac	<i>Muntiacus reevesi</i>	
	Buzzard	<i>Buteo buteo</i>	
	Long-tailed Tit	<i>Aegithalos caudatus</i>	
	Common Darter	<i>Sympetrum striolatum</i>	
	Comma	<i>Polygonia c-album</i>	
	Grasshopper, Lesser Marsh	<i>Chorthippus albomarginatus</i>	
26/9/18	Hornet	<i>Vespa crabro</i>	
	Ivy Bee	<i>Colletes hederæ</i>	
	Red Admiral	<i>Vanessa atalanta</i>	
	Speckled Wood	<i>Pararge aegeria</i>	

Survey results for 2019

Name of site:	Martham Smee : Common Rd Site
Date of surveys:	12/06/18, 22/6/18, 10/7/18, 19/7/18, 31/7/18
Surveyors:	Peter Cawley, Yvonne Mynett, Steve Pinnington, Tim Hodge, Stewart Wright

Plant List

Common Name	Scientific Name	Comment
Ash	<i>Fraxinus excelsior</i>	
Bent-grass, Creeping	<i>Agrostis stolonifera</i>	
Black Medic	<i>Medicago lupulina</i>	

Common Name	Scientific Name	Comment
Blackthorn	<i>Prunus spinosa</i>	
Bramble agg.	<i>Rubus</i> agg.	
Brome, Barren	<i>Bromus sterilis</i>	
Burdock, Lesser	<i>Arctium minus</i>	
Buttercup, Creeping	<i>Ranunculus repens</i>	
Campion, Red	<i>Silene dioica</i>	
Cleavers	<i>Galium aparine</i>	
Cocksfoot	<i>Dactylis glomerata</i>	
Common Holly	<i>Ilex aquifolium</i>	
Honeysuckle, Common	<i>Lonicera periclymenum</i>	
Common Hop	<i>Humulus lupulus</i>	
Common Ivy	<i>Hedera helix</i>	
Common Nettle	<i>Urtica dioica</i>	
Cow Parsley	<i>Anthriscus sylvestris</i>	
Cranesbill, Cut-leaved	<i>Geranium dissectum</i>	
Currant, Red	<i>Ribes rubrum</i>	
Daisy, Common	<i>Bellis perennis</i>	
Dandelion agg.	<i>Taraxacum</i> agg.	
Dead-nettle, Red	<i>Lamium purpureum</i>	
Dead-nettle, White	<i>Lamium album</i>	
Dock, Broad-leaved	<i>Rumex obtusifolius</i>	
Dock, Wood	<i>Rumex sanguineus</i>	
Dog Rose sp.	<i>Rosa canina</i> sp.	
Elder	<i>Sambucus niger</i>	
Enchanter's Nightshade	<i>Circaea lutetiana</i>	
Fern, Broad Buckler	<i>Dryopteris dilatata</i>	
Ground-ivy	<i>Glechoma hederacea</i>	
Hawthorn	<i>Crataegus monogyna</i>	
Hazel	<i>Corylus avellana</i>	
Hemlock	<i>Conium maculatum</i>	
Hogweed	<i>Heracleum sphondylium</i>	
Horehound, Black	<i>Ballota nigra</i>	
Hornbeam	<i>Carpinus betulus</i>	
Iris, Yellow Flag	<i>Iris pseudacorus</i>	
Mallow, Common	<i>Malva sylvestris</i>	
Mouse-ear Chickweed	<i>Cerastium vulgatum</i>	
Mugwort	<i>Artemisia vulgaris</i>	
Nightshade, Black	<i>Solanum nigrum</i>	
Oak, Common	<i>Quercus robur</i>	
Oat-grass, False	<i>Arrhenatherum elatius</i>	
Ox-eye Daisy	<i>Leucanthemum vulgare</i>	
Plantain, Greater	<i>Plantago major</i>	

Common Name	Scientific Name	Comment
Plantain, Ribwort	<i>Plantago lanceolata</i>	
Scarlet Pimpernel	<i>Anagallis arvensis</i>	
Sedge, Remote	<i>Carex remota</i>	
Sow-thistle Prickly	<i>Sonchus asper</i>	
Thistle, Marsh	<i>Cirsium palustre</i>	
Thistle, Spear	<i>Cirsium vulgare</i>	
Willowherb, Great	<i>Epilobium hirsutum</i>	
Woundwort, Hedge	<i>Stachys sylvatica</i>	
Yorkshire Fog	<i>Holcus lanatus</i>	

Animal List

Date Seen	Species Name	Scientific Name	Comments
12/6/18	Deer sp.	<i>Cervidae sp.</i>	Dung
	Blackcap	<i>Sylvia atricapilla</i>	Heard
	Marsh Harrier	<i>Circus aeruginosus</i>	Overhead
	Robin	<i>Erithacus rubecula</i>	
	Swallow	<i>Hirundo rustica</i>	Overhead
	Common Carder Bee	<i>Bombus pascuorum</i>	
	Damselfly, Blue-tailed	<i>Ischnura elegans</i>	
	Marmalade Hoverfly	<i>Episyrphus balteatus</i>	
	Nettle Tap Moth	<i>Anthophila fabriciana</i>	
	Yellow-barred Longhorn Moth	<i>Nemophora degeerella</i>	
22/6/18	Black-tailed Skimmer	<i>Orthetrum cancellatum</i>	
	Damselfly, Azure	<i>Coenagrion puella</i>	
	Hawker, Norfolk	<i>Aeshna isoeles</i>	
	Honey Bee	<i>Apis mellifera</i>	
10/7/18	Blackcap	<i>Sylvia atricapilla</i>	Heard
		<i>Chrysogaster solstitialis</i>	(Hoverfly)
		<i>Phytomyza lappae</i>	(Fly)
		<i>Tephritis cometa</i>	(Fly)
	Black-horned Gem	<i>Microchrysa polita</i>	(Fly)
	Comma	<i>Polygonia c-album</i>	
	Common Marble Moth	<i>Celypha lacunana</i>	
	Common Red Soldier Beetle	<i>Rhagonycha fulva</i>	
	Little Snipefly	<i>Chrysopilus asiliformis</i>	
	Long-horned Black Legionnaire	<i>Beris geniculata</i>	(Fly)
	Red Admiral	<i>Vanessa atalanta</i>	
	Ringlet	<i>Aphantopus hyperantus</i>	
	Small Magpie Moth	<i>Anania hortulata</i>	
	Southern Hawker	<i>Aeshna cyanea</i>	
	Speckled Bush Cricket	<i>Leptophyes punctatissima</i>	

Date Seen	Species Name	Scientific Name	Comments
19/7/18	European Mole	<i>Talpa europaea</i>	Molehills
	Grey Squirrel	<i>Sciurus carolinensis</i>	
	Hedgehog	<i>Erinaceus europaeus</i>	Droppings
	Kestrel	<i>Falco tinnunculus</i>	
	Sparrowhawk	<i>Accipiter nisus</i>	
	Wood Pigeon	<i>Columba palumbus</i>	
		<i>Athalia rosae</i>	
		<i>Chrysogaster solstitialis</i>	Hoverfly
		<i>Eristalis intricarius</i>	(Fly)
		<i>Eupeodes latifasciatus</i>	(Fly)
		<i>Heterotoma planicornis</i>	(True Bug)
		<i>Muscina levida</i>	(Fly)
		<i>Phania funesta</i>	(Fly)
		<i>Phaonia angelicae</i>	(Fly)
		<i>Phytomyza lappae</i>	(Fly)
		<i>Rutpela maculata</i>	(Beetle)
		<i>Sarcophaga carnaria</i>	(Fly)
		<i>Sarcophaga dissimilis</i>	(Fly)
		<i>Sarcophaga pumila</i>	(Fly)
		<i>Sarcophaga subvicina</i>	(Fly)
		<i>Sarcophaga variegata</i>	(Fly)
		<i>Voria ruralis</i>	(Fly)
	Cereal Leaf Beetle	<i>Oulema melanopus s.l.</i>	
	Common Greenbottle	<i>Lucilia caesar</i>	
	Common Red Soldier Beetle	<i>Rhagonycha fulva</i>	
	Common Wasp	<i>Vespula vulgaris</i>	
	Common Yellow Face Bee	<i>Hylaeus communis</i>	
	Early Mining Bee	<i>Andrena haemorrhoa</i>	
	Face Fly	<i>Musca autumnalis</i>	
	Gatekeeper	<i>Pyronia tithonus</i>	
	Ladybird, 7 spot	<i>Coccinella septempunctata</i>	
	Marmalade Hoverfly	<i>Episyrphus balteatus</i>	
	Mother-of-Pearl Moth	<i>Pleuroptya ruralis</i>	
	Orange-tailed Mining-bee	<i>Andrena haemorrhoa</i>	
	Peacock Butterfly	<i>Aglais io</i>	
	Pellucid Hoverfly	<i>Volucella pellucens</i>	
	Pouting Woodlouse-fly	<i>Rhinophora lepida</i>	
	Ruddy Darter	<i>Sympetrum sanguineum</i>	
	Southern Hawker	<i>Aeshna cyanea</i>	
	Thick-thighed Flower Beetle	<i>Oedemera nobilis</i>	

Date Seen	Species Name	Scientific Name	Comments
	Tree Bee	<i>Bombus hypnorum</i>	
	Turnip Sawfly	<i>Athalia rosae</i>	
31/7/18		<i>Calycomyza artemisiae</i>	(Fly)
	Square-spot Deerfly	<i>Chrysops viduatus</i>	
	Buff-tailed Bumble Bee	<i>Bombus terrestris</i>	(Queen)
	European Hornet	<i>Vespa crabro</i>	
21/8/18	Muntjac	<i>Muntiacus reevesi</i>	
	Buzzard	<i>Buteo buteo</i>	
	Long-tailed Tit	<i>Aegithalos caudatus</i>	
	Purple Hairstreak	<i>Neozephyrus quercus</i>	
	Long- Winged Conehead	<i>Conocephalus discolor</i>	
	Common Frog	<i>Rana temporaria</i>	
	Common Darter	<i>Sympetrum striolatum</i>	
	Comma	<i>Polygonia c-album</i>	
	Grasshopper, Lesser Marsh	<i>Chorthippus albomarginatus</i>	
26/9/18	Hornet	<i>Vespa crabro</i>	
	Ivy Bee	<i>Colletes hederæ</i>	
	Red Admiral	<i>Vanessa atalanta</i>	
	Speckled Wood	<i>Pararge aegeria</i>	
7/10/18	European Mole	<i>Talpa europaea</i>	Molehills
	Grey Squirrel	<i>Sciurus carolinensis</i>	
	Red Deer	<i>Cervus elaphus</i>	Tracks
	Brambling	<i>Fringilla montifringilla</i>	
	Bullfinch	<i>Pyrrhula pyrrhula</i>	
	Chaffinch	<i>Fringilla coelebs</i>	
	Great Spotted Woodpecker	<i>Dendrocopos major</i>	
	Fieldfare	<i>Turdus pilaris</i>	
	Redwing	<i>Turdus iliacus</i>	
	Reed Bunting	<i>Emberiza schoeniclus</i>	
	Yellowhammer	<i>Emberiza citrinella</i>	
	Base-spotted Pigmy	<i>Stigmella basiguttella</i>	Micro Moth larval mines on Oak
	Bent-barred Pigmy	<i>Ectoedemia angulifasciella</i>	Micro Moth larval mines on Rose
	Bordered Carl	<i>Coptotriche marginea</i>	Micro Moth larval mines on Bramble
	Broad-barred Midget	<i>Phyllonorycter nicellii</i>	Micro Moth larval mines on Hazel
	Coarse Hazel Pigmy	<i>Stigmella floslactella</i>	Micro Moth larval mines on Hazel
	Golden Pigmy	<i>Stigmella aurella</i>	Micro Moth larval mines on Bramble

Date Seen	Species Name	Scientific Name	Comments
	Common Darter	<i>Sympetrum striolatum</i>	
	Common Oak Midget	<i>Phyllonorycter quercifoliella</i>	Micro Moth larval mines on Oak
	Common Cloaked Shoot	<i>Gypsonoma dealbana</i>	Micro Moth larval mines on Sallow
	Common Fruit Tree Pigmy	<i>Stigmella oxyacanthella</i>	Micro Moth larval mines on Hawthorn
	Common Slender	<i>Gracillaria syringella</i>	Micro Moth larval mines on Ash
	Common Thorn Midget	<i>Phyllonorycter oxyacanthae</i>	Micro Moth larval mines on Hawthorn
	Garden Midget	<i>Phyllonorycter messaniella</i>	Micro Moth larval mines on Oak
	German Wasp	<i>Vespula germanica</i>	
	Greenish Thorn Pigmy	<i>Stigmella hybnerella</i>	Micro Moth larval mines on Hawthorn
	Hawthorn Midget	<i>Phyllonorycter corylifoliella</i>	Micro Moth larval mines on Hawthorn
	Hawthorn Slender	<i>Parornix anglicella</i>	Micro Moth larval mines on Hawthorn
	Hazel Slender	<i>Parornix devoniella</i>	Micro Moth larval mines on Hazel
	Hemp-agrimony Plume	<i>Adaina microdactyla</i>	Micro Moth gall on Hemp Agrimony
	Hornbeam Midget	<i>Phyllonorycter tenerella</i>	Micro Moth larval mines on Hornbeam
	Hornet	<i>Vespa crabro</i>	
	Ladybird, Harlequin	<i>Harmonia axyridis</i>	
	Ladybird, 7 spot	<i>Coccinella septempunctata</i>	
	Large Birch Pigmy	<i>Ectoedemia occultella</i>	Micro Moth larval mines on Birch
	Large-streak Midget	<i>Phyllonorycter salicicolella</i>	Micro Moth larval mines on Sallow
	Little Ermine	<i>Swammerdamia pyrella</i>	Micro Moth larvae on Hawthorn
	Mugwort Case-bearer	<i>Coleophora artemisicolella</i>	Micro Moth case-bearing larvae on Mugwort
	Mugwort Slender	<i>Leucospilapteryx omissella</i>	Micro Moth larval mines on Mugwort
	Nut-leaf Blister Moth	<i>Phyllonorycter coryli</i>	Micro Moth larval mines on Hazel
	Nut-tree Pigmy	<i>Stigmella microtheriella</i>	Micro Moth larval mines on Hazel
	Oak Bent-wing	<i>Bucculatrix ulmella</i>	Micro Moth larval mines on Oak

Date Seen	Species Name	Scientific Name	Comments
	Oak Carl	<i>Tischeria ekebladella</i>	Micro Moth larval mines on Oak
	Oak Satin Lift	<i>Heliozella sericiella</i>	Micro Moth larval mines on Oak
	Painted Lady	<i>Vanessa cardui</i>	
	Pale Birch Pigmy	<i>Stigmella confusella</i>	Micro Moth larval mines on Birch
	Pale-bordered Piercer	<i>Grapholita janthinana</i>	Micro Moth larval feeding signs on hawthorn
	Pale Feathered Leaf-cutter	<i>Incurvaria pectinea</i>	Micro Moth larval mines on Birch
	Pale Oak Midget	<i>Phyllonorycter heegeriella</i>	Micro Moth larval mines on Oak
	Pale Thistle Case-Bearer	<i>Coleophora peribenanderi</i>	Micro Moth case-bearing larvae on Thistle
	Pinch-barred Pigmy	<i>Ectoedemia atricollis</i>	Micro Moth larval mines on Oak
	Pointed Groundling	<i>Scrobipalpa acuminatella</i>	Micro Moth larval mines on Thistle
	Red Admiral	<i>Vanessa atalanta</i>	
	Red Birch Midget	<i>Phyllonorycter ulmifoliella</i>	Micro Moth larval mines on Birch
	Red-headed Pigmy	<i>Stigmella ruficapitella</i>	Micro Moth larval mines on Oak
	Rose Leaf-miner	<i>Stigmella anomalella</i>	Micro Moth larval mines on Rose
	Sallow Pigmy	<i>Stigmella salicis</i>	Micro Moth larval mines on Sallow
	Scrubland Pigmy	<i>Stigmella plagicolella</i>	Micro Moth larval mines on Blackthorn
	Shieldbug, Birch	<i>Elasmotethus interstinctus</i>	
	Shieldbug, Green	<i>Palomena prasina</i>	
	Shieldbug, Hawthorn	<i>Acanthosoma haemorrhoidale</i>	
	Sloe Midget	<i>Phyllonorycter spinicolella</i>	Micro Moth larval mines on Blackthorn
	Speckled Wood	<i>Pararge aegeria</i>	
	Small Birch Pigmy	<i>Stigmella sakhalinella</i>	Micro Moth larval mines on Birch
	Southern Hawker	<i>Aeshna cyanea</i>	
	Vapourer Moth	<i>Orgyia antiqua</i>	Macro Moth
	White-banded Pigmy	<i>Ectoedemia albifasciella</i>	Micro Moth larval mines on Oak
	White-spot Pigmy	<i>Ectoedemia heringi</i>	Micro Moth larval mines on Oak

Date Seen	Species Name	Scientific Name	Comments
	White-triangle Slender	<i>Caloptilia stigmatella</i>	Micro Moth larval mines on Willow
	Willow Emerald Damselfly	<i>Chalcolestes viridis</i>	
	Willow Flea Beetle	<i>Crepidodea aurata</i>	
	Willow Midget	<i>Phyllonorycter viminiella</i>	Micro Moth larval mines on Willow
	Willow Pigmy	<i>Stigmella obliquella</i>	Micro Moth larval mines on Willow
	Willow Red-gall Sawfly	<i>Pontania proxima</i>	Sawfly - galls on Willow
		<i>Leiobunum blackwallii</i>	Harvestman
	Marbled Orb-Weaver	<i>Araneus marmoreus</i>	Spider
		<i>Anisostephus betulinus</i>	Mite - galls on Birch
	Elder Aphid	<i>Aphis sambuci</i>	
		<i>Cryptomyzus ribis</i>	Aphid on Red Currant
		<i>Metallus pumilis</i>	Sawfly - larval mines on Bramble
		<i>Neuroterus albipes</i>	Wasp - galls on Oak
		<i>Neuroterus anthracinus</i>	Wasp - galls on Oak
		<i>Rhamphus oxyacanthae</i>	Weevil - larval mines on hawthorn
		<i>Agromyza pseudoreptans</i>	Fly - larval mines on Stinging Nettle
		<i>Dasineura plicatrix</i>	Fly - galls on Bramble
		<i>Iteomyia capreae</i>	Fly - galls on Sallow
		<i>Iteomyia major</i>	Fly - galls on Sallow
		<i>Liriomyza amoena</i>	Fly - larval mines on Elder
		<i>Phytomyza ilicis</i>	Fly - larval mines on Holly
		<i>Phytomyza lappae</i>	Fly - larval mines on Burdock
		<i>Rabdophaga rosaria</i>	Fly - galls on Willow
		<i>Semudobia tarda</i>	Fly - galls on Birch
		<i>Trypeta artemisiae</i>	Fly - larval mines on Mugwort
24/10/18	Common Linnet	<i>Linaria cannabina</i>	
	Common Snipe	<i>Gallinago gallinago</i>	
	Eurasian Siskin	<i>Spinus spinus</i>	
	Goldcrest	<i>Regulus regulus</i>	
	Lesser Redpoll	<i>Acanthis cabaret</i>	
	Red-legged Partridge	<i>Alectoris rufa</i>	
	Black-spot Sallow Pigmy	<i>Ectoedemia intimella</i>	Micro Moth - larval mines on Sallow
	Broken-barred Pigmy	<i>Ectoedemia minimella</i>	Micro Moth - larval mines on Birch
	Honeysuckle Midget	<i>Phyllonorycter trifasciella</i>	Micro Moth larval mines on Honeysuckle
	Woundwort Case-bearer	<i>Coleophora lineolea</i>	Micro Moth case-bearing larvae on Hedge Woundwort
		<i>Agromyza phragmitidis</i>	Fly - larval mines on reed
		<i>Chromatomyia aprilina</i>	Fly - larval mines on Honeysuckle

Date Seen	Species Name	Scientific Name	Comments
		<i>Liriomyza amoena</i>	Fly - larval mines on Elder
		<i>Liriomyza eupatorii</i>	Fly - larval mines on Hemp Agrimony
11/12/18	Blackbird	<i>Turdus merula</i>	
	Jay	<i>Garrulus glandarius</i>	
	Wren	<i>Troglodytes troglodytes</i>	
	Blue Tit	<i>Cyanistes caeruleus</i>	
6/3/19	Wren	<i>Troglodytes troglodytes</i>	
17/4/19	Holly Blue	<i>Celastrina argiolus</i>	
9/6/19	Norfolk Hawkers	<i>Aeshna isocles</i>	9 seen together
25/6/19	Grass Snake	<i>Natrix natrix</i>	
18/8/19	Migrant Hawker	<i>Aeshna mixta</i>	

Other species record (2019)

	Species Name	Scientific Name	Comments
Fungi	Angel Bonnet	<i>Mycena archangeliana</i>	
	Birch Besom	<i>Taphrina betulina</i>	Ascomycete on Birch
	Birch Woodwart	<i>Jackrogersella multiformis</i>	
	Bleeding Oak Crust	<i>Stereum gausapatum</i>	
	Bleeding Broadleaf Crust	<i>Stereum rugosum</i>	
	Blushing Bracket	<i>Daedaleopsis confragosa</i>	On Willow
	Brown Cup	<i>Rustroemia firma</i>	
	Buttercup	<i>Rhodocollybia butyracea</i>	
	Candlesnuff	<i>Xylaria hypoxylon</i>	
	Clustered Bonnet	<i>Psathyrella multipedata</i>	
	Daisy Rust	<i>Puccinia lagenophorae</i>	
	Dead Mans Fingers	<i>Xylaria polymorpha</i>	
	Deceiver	<i>Laccaria laccata</i>	
	Dewdrop Bonnet	<i>Hemimycena tortuosa</i>	
	Hairy Curtain Crust	<i>Stereum hirsutum</i>	
	Holly Speckle	<i>Trochila ilicina</i>	Ascomycete on Holly Leaves
	Honey Fungus	<i>Armillaria mellea</i>	
	Ivy Speckle	<i>Trochila craterium</i>	Ascomycete on Ivy Leaves
	Lilac Bonnet	<i>Mycena pura</i>	
	White Milking Bonnet	<i>Mycena galopus var. candida</i>	
	Mint Mildew	<i>Neoverysiphe galeopsidis</i>	Powdery mildew on Dead Nettle

	Species Name	Scientific Name	Comments
	Oak Mildew	<i>Erysiphe alphitoides</i>	
	Oyster Mushroom	<i>Pleurotus ostreatus</i>	
	Pale Brittlestem	<i>Psathyrella candolleana</i>	
	Scarlet Elfcup	<i>Sarcoscypha austriaca</i>	
	Smoky Bracket	<i>Bjerkandera adusta</i>	
	Sulphur Knight	<i>Tricholoma sulphureum</i>	
	Umbellifer Mildew	<i>Erysiphe heraclei</i>	Powdery mildew on Hogweed
	Violet Bramble Rust	<i>Phragmidium violaceum</i>	Rust on Bramble Leaves
	Willow Shield	<i>Pluteus salicinus</i>	
	Willow Mildew	<i>Erysiphe adunca</i> var. <i>adunca</i>	Powdery mildew on Sallow
	Witches' Butter	<i>Exidia glandulosa</i>	
	Yellow Stainer	<i>Agaricus xanthodermus</i>	
		<i>Erysiphe circaeae</i>	Powdery mildew on Enchanter's Nightshade
		<i>Erysiphe urticae</i>	Powdery mildew on Stinging Nettle
		<i>Golovinomyces cichoracearum</i> var. <i>cichoracearum</i>	Powdery mildew on sow thistle
		<i>Mycena metata</i>	Bonnet
		<i>Puccinia arenariae</i>	Rust on Red Campion
		<i>Puccinia cnici</i>	Rust on Spear Thistle
		<i>Ramularia rubella</i>	Ascomycete on Broad-leaved Dock
		<i>Ramularia sambucina</i>	Ascomycete on Elder
		<i>Septoria convolvuli</i>	Ascomycete on Bindweed
		<i>Septoria stachydis</i>	Ascomycete on Hedge Woundwort
		<i>Xanthoriicola physciae</i>	Ascomycete on lichen Xanthoria parietina
Mosses	Clustered Feather-moss	<i>Rhynchostegium confertum</i>	
	Common Feather-moss	<i>Kindbergia praelonga</i>	
	Cypress-leaved Plait-moss	<i>Hypnum cupressiforme</i>	
	Intermediate Screw-moss	<i>Syntrichia intermedia</i>	
	Rough-stalked Feather-moss	<i>Brachythecium rutabulum</i>	

	Species Name	Scientific Name	Comments
	Silky Forklet-moss	<i>Dicranella heteromalla</i>	
	White-tipped Bristle-moss	<i>Orthotrichum diaphanum</i>	
	Wood Bristle-moss	<i>Orthotrichum affine</i>	

Extract of Bat Survey Result – full report sent to parish council



Bat Survey results for TG4317 from 3 survey nights

Below you can find a summary of the main findings from your bat survey visits. Further information for individual visits can be found on the following pages.

The total number of recordings per night:



Bat species detected:

Our provisional analysis of the recordings detected the following species. The numbers relate to the number of bat passes rather than the number of individual bats.

Species	Total number of passes (all nights)
Brown long-eared bat	2
Common pipistrelle	503
Daubenton's bat	2
Leisler's bat	4
Nathusius' pipistrelle	3
Natterer's bat	7
Noctule	33
Serotine	35
Soprano pipistrelle	466

Below are details of recordings that could not be assigned with confidence to a single species.

Species	Total number of passes (all nights)
Leisler's bat or Noctule	2
Myotis species	7
Pipistrelle species	107

Note: Pipistrelle species = this refers to a recording of a bat in the genus *Pipistrellus* that cannot be identified to species. In the UK, possible species include Common Pipistrelle, Soprano Pipistrelle and Nathusius' Pipistrelle. Myotis species = this refers to a recording of a bat in the genus *Myotis* that cannot be identified with confidence.