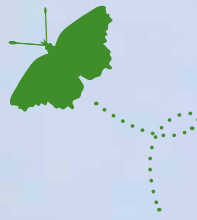


# Norfolk Commons Week



**Saturday 6 to Sunday 14 July 2019**

Our heritage of commons across the county are part of what makes Norfolk special: brilliant for wildlife and great places to explore. Help us celebrate them.



Join Norfolk Wildlife Trust  
in celebrating  
Norfolk's commons.

**All activities are free**



**WILDLIFE IN  
COMMON**



Saving **Norfolk's Wildlife** for the Future

## Saturday 6 July

### Reptiles of NWT Roydon Common

**Saturday 6 July, 10am to 12pm**

NWT Roydon Common has a fantastic population of reptiles, join us as we go in search of them and learn what makes this group of animals so special.

**Leader:** Karl Charters

**Location:** NWT Roydon Common, West Norfolk

**Booking essential:** phone 01603 598318 or email [wild@norfolkwildlifetrust.org.uk](mailto:wild@norfolkwildlifetrust.org.uk)

### A wild time on the heath

**Saturday 6 July, 10am to 1pm**

Do you like the outdoors? Would you like to help make a difference for wildlife on Broome Heath? Join Norfolk Wildlife Trust and the Ditchingham Estate and help carry out simple conservation tasks, including hay raking, silver birch thinning and scrub removal. Never done anything like this before? Don't worry you can do as much or as little as you want. Supported by Essex & Suffolk Water.

**Leader:** Mark Webster, Norfolk Wildlife Trust

**Location:** Broome Heath, Ditchingham

**Booking essential:** phone 01603 598318 or email [wild@norfolkwildlifetrust.org.uk](mailto:wild@norfolkwildlifetrust.org.uk)

### Wildlife in common

**Saturday 6 July, 3 to 5pm**

Join us for an afternoon dedicated to wildlife. Have a go at making a bird box, create a minibeast home and try out our 'Common Knowledge' quiz. Lots to do, suitable for all ages.

**Leader:** Norfolk Wildlife Trust and North Runcton Wildlife Group

**Location:** The Meeting Place, The Green, North Runcton, Norfolk, PE33 0RB

**No need to book, just turn-up and join-in.**



## Sunday 7 July

### An introduction to orchid identification

**Sunday 7 July, 10am to 12pm**

Learn to identify some of the orchids associated with Norfolk commons.

This two-hour session will introduce you to the main characteristics of orchids and key features to look for when identifying them.

**Leader:** Roger Jones

**Location:** Buxton Heath

**Booking essential:** phone 01603 598318 or email [wild@norfolkwildlifetrust.org.uk](mailto:wild@norfolkwildlifetrust.org.uk)

### Mini-beast fun for the family

**Sunday 7 July, 2.30 to 4pm**

Find your own real life bugs on Broome Heath and then make a mini-beast from natural materials, plus lots of free making activities in the village hall afterwards. Fun for all the family.

**Leader:** Norfolk Wildlife Trust and Waveney and Blythe Arts

**Location:** Meet outside Ditchingham Village Hall, Loddon Road, Ditchingham, Norfolk, NR35 2QN

**No need to book, just turn-up and join in.**



## Monday 8 July

### Exploring the common

**Monday 8 July, 10 to 11.30am**

This fantastic common, which is one of five in the village, is a SSSI full of wildflowers, insects and birds. Discover just some of the flora and fauna on this beautiful common and learn how the site is managed.

**Leader:** Margaret Downland, Southrepps Volunteer Group

**Location:** Southrepps

**Booking essential:** phone 01603 598318 or email [wild@norfolkwildlifetrust.org.uk](mailto:wild@norfolkwildlifetrust.org.uk)

### A common wildlife wander

**Monday 8 July, 10am to 12pm**

Nick Acheson will take you on a tour of Litcham Common showing you the wildlife that makes this site so special.

**Leader:** Nick Acheson, Norfolk Wildlife Trust

**Meeting point:** Litcham Common Car Park, Dunham Road, Litcham, Norfolk, PE32 2NT

**No need to book, just turn-up and join in.**

### The history of Catfield Common

**Monday 8 July, 2 to 3.30pm**

Keith Bacon, local historian, will take us back in time and reveal some of the history of this common nestled within the Broads.

**Leader:** Keith Bacon

**Location:** Catfield Common, near NWT Hickling Broad

**Booking essential:** phone 01603 598318 or email [wild@norfolkwildlifetrust.org.uk](mailto:wild@norfolkwildlifetrust.org.uk)

### Bats, bush-cricket and sounds of the night

**Monday 8 July, 8 to 10pm**

As dusk falls join Stuart Newson on Flordon Common for an exploration of this fantastic site looking for bats and bush-cricket, who knows what we may find?

**Leader:** Stuart Newson, Flordon Common

**Location:** Flordon Common

**Booking essential:** phone 01603 598318 or email [wild@norfolkwildlifetrust.org.uk](mailto:wild@norfolkwildlifetrust.org.uk)

## Tuesday 9 July

### A wild walk on the heath

**Tuesday 9 July, 9.30am to 12pm**

A walk taking in the wildlife and conservation management of almost 67 ha of heathland, woodland, and valley mire. Buxton Heath is home to many rare and interesting plants and animals and is a special area of conservation.

**Leader:** Steve Collins, Norfolk Wildlife Trust

**Location:** Buxton Heath

**Booking essential:** phone 01603 598318 or email [wild@norfolkwildlifetrust.org.uk](mailto:wild@norfolkwildlifetrust.org.uk)

### Ghost commons of Norfolk

**Tuesday 9 July, 9.30am to 12.30pm**

In times gone by it was said that you could walk across Norfolk never leaving a common, with half of the county recognised as common land. Join us on this walk as we take in some of the ghost commons of Wymondham and Wrentham and learn about the history (and natural history) of commons in Norfolk.

**Leader:** Helen Baczowska, Norfolk Wildlife Trust

**Location:** Wymondham

**Booking essential:** phone 01603 598318 or email [wild@norfolkwildlifetrust.org.uk](mailto:wild@norfolkwildlifetrust.org.uk)

### Reptile ramble

**Tuesday 9 July, 2 to 4.30pm**

Inleborough Hill and the surrounding heathland provide a haven for three species of native reptiles, plus a whole host of other interesting wildlife. Join National Trust Rangers for a tour of the area, keeping eyes peeled for adders and lizards as well as an array of insect and birdlife.

**Leaders:** Rob Coleman and Mark Webster, National Trust

**Location:** Roman Camp car park (NT)

**Booking essential:** phone 01603 598318 or email [wild@norfolkwildlifetrust.org.uk](mailto:wild@norfolkwildlifetrust.org.uk)



Norfolk County Council





## Wednesday 10 July

### In step with the heath...

**Wednesday 10 July,  
9.30am to 12.30pm**

This fantastic nature reserve is home to a whole host of wildlife from nightjars to woodlarks, green tiger beetles to black darter dragonflies. Join Ash Murray, Reserves Manager, as he shows us some of the things that make this reserve so special and gives us an insight into how the reserve is managed.

**Leader:** Ash Murray, Norfolk Wildlife Trust

**Location:** NWT Roydon Common

**Booking essential:** phone 01603 598318 or email [wild@norfolkwildlifetrust.org.uk](mailto:wild@norfolkwildlifetrust.org.uk)

### On the trail of Robert Kett

**Wednesday 10 July, 2 to 4pm**

Join us as we follow the footsteps of Robert and William Kett and delve into the Norfolk Rising of 1549 and the history behind the enclosure of common land that led to the uprising.

**Leader:** Gemma Walker, Norfolk Wildlife Trust

**Location:** Wymondham

**Booking essential:** phone 01603 598318 or email [wild@norfolkwildlifetrust.org.uk](mailto:wild@norfolkwildlifetrust.org.uk)

### New light on the history of Norfolk's commons

**Wednesday 10 July, 7.30 to 9pm**

Through this talk Tom Williamson will describe the results of recent research, carried out as part of the 'Wildlife in Common' project, into the history and archaeology of Norfolk's common land.

**Leader:** Professor Tom Williamson, UEA

**Location:** Southrepps

**Booking essential:** phone 01603 598318 or email [wild@norfolkwildlifetrust.org.uk](mailto:wild@norfolkwildlifetrust.org.uk)

## Friday 12 July

### Hoe Common: history, wildlife and conservation

**Friday 12 July, 10.30 to 11.30am**

Hoe Common – a 19th Century enclosure, a fuel allotment for the poor, military trenches, a boundary of ancient oaks, a bio-diverse acid heathland and home to the Hoe bird walk. Just some of the things that make Hoe Common so special.

**Leader:** Dick and Sue Malt, Hoe Common

**Location:** Hoe Common

**Booking essential:** phone 01603 598318 or email [wild@norfolkwildlifetrust.org.uk](mailto:wild@norfolkwildlifetrust.org.uk)

## Thursday 11 July

### Exploring Whitwell Common

**Thursday 11 July, 2 to 3.30pm**

Whitwell Common is a hidden gem in the Wensum Valley and designated a SSSI for its typical rare fen flora. Discover its treasures, history and management through this walk with the Trustees of Whitwell Common.

**Leader:** Lin Garland, Trustee of Whitwell Common

**Location:** Whitwell Common

**Booking essential:** phone 01603 598318 or email [wild@norfolkwildlifetrust.org.uk](mailto:wild@norfolkwildlifetrust.org.uk)

### Between a rock and cold place, on a hot day?

**Thursday 11 July, 2 to 4pm**

Guided Walk looking at the hugely varied ice-age geology and botany of this classic Breckland site.

**Leader:** Mark Webster, Thetford Town Council

**Meeting point:** Barnham Cross Common, main (large) car park, on the playing fields near the Spar shop and garage, A134 Bury Road, Thetford, nearest postcode IP24 3DZ

**No need to book**

### Stepping up to help common wildlife

**Friday 12 July, 1 to 2pm**

The Felbeck Trust have been working hard to improve and increase the wildlife of Sustead Common. Join Trevor Williams on this tour of the common to find out the wildlife it is home to and what is being done to help it.

**Leader:** Trevor Williams,

The Felbeck Trust

**Location:** Sustead Common

**Booking essential:** phone 01603 598318 or email [wild@norfolkwildlifetrust.org.uk](mailto:wild@norfolkwildlifetrust.org.uk)

### Minibeast magic on the common

**Friday 12 July, 3.30 to 5pm**

With bug pots in hand we go in search of some of the weird and wonderful minibeasts found on the common – don't worry we will provide all the equipment, just bring yourself. Take part in a minibeast hunt, games and craft activities.

**Leader:** Norfolk Wildlife Trust and Southrepps Volunteer Group

**Meeting point:** School Common, entrance opposite Antingham and Southrepps Primary School

**No need to book, just turn-up and join in**

### A wildlife walk on Beeston Common

**Thursday 11 July, 2.30 to 5pm**

Join honorary warden, Francis Farrow, for a fascinating insight to the wildlife of Beeston Common on a summer's afternoon. We will be on the look-out for butterflies, dragonflies, birds and wildflowers as we pass through the different habitats of this special site.

**Leader:** Francis Farrow

**Meeting point:** Layby next to Beeston Common (TG 166 425, nearest postcode NR26 8RX)

**No need to book**

### Walking through common history

**Thursday 11 July, 5.45 to 8.15pm**

Tom Williamson, landscape historian and archaeologist, will take us on a tour of four commons, Fritton, Morningthorpe, Shelton and Woodgreen and give us an insight into how to read the landscape history of these amazing commons.

**Leader:** Professor Tom Williamson, UEA

**Location:** Fritton Common

**Booking essential:** phone 01603 598318 or email [wild@norfolkwildlifetrust.org.uk](mailto:wild@norfolkwildlifetrust.org.uk)

### Common (and not so common) wildflowers

**Friday 12 July, 7.30 to 9pm**

Common and not so common wild flowers: discover 50 plant species found on common land and roadside verges local to Erpingham, Alby and Aldborough. Our verges and commons are havens for many flowers once widespread in the wider countryside.

**Leader:** David North, Norfolk Wildlife Trust

**Meeting point:** Erpingham with Calthorpe Village Hall, The Street, Erpingham, Norfolk, NR11 7QB

**No need to book**

## Saturday 13 July

### Whitwell Common Open Day

**Saturday 13 July, 11am to 3pm**

The Trustees of Whitwell Common welcome you to explore this beautiful common with them on this special open day. There will be opportunities to go on guided walks, see some traditional crafts in action and sample food from the fire pit. For further details see their Facebook page – Whitwell Common, Reepham, Norfolk.

**Leader:** Trustees of Whitwell Common

**Location:** Whitwell Common, Reepham, Norfolk

**No need to book, just turn-up and join-in**

## Saturday 13 July

### CONTINUED...

#### Coltishall to Belaugh

**Saturday 13 July, 10am to 12pm**

Neville Andrews guides you from Coltishall to Belaugh taking in the history and wildlife as you go.

**Leader:** Neville Andrews

**Meeting Point:** Lower Common car park, by The Rising Sun pub, Off Wroxham Road, Coltishall, Norfolk, NR12 7EA

**No need to book, just turn-up and join-in**

#### Coltishall – A look at now, then and nature

**Saturday 13 July, 10am to 12pm**

Join Peter Croot on a walk around Coltishall taking in the sites, history and nature of this fascinating village on the river.

**Leader:** Peter Croot

**Meeting Point:** Lower Common car park, by The Rising Sun Pub, Off Wroxham Road, Coltishall, Norfolk, NR12 7EA

**No need to book, just turn-up and join-in**

## Sunday 14 July

#### Spurrell's Wood – official opening event

**Sunday 14 July, 10am to 4pm**

This event is to mark the official opening of Spurrell's Wood – 5 acres of mixed deciduous woodland – purchased by Felbeck Trust in 2018. There will be walks around the woodland, displays, entertainment and refreshments.

For further information visit

[www.felbecktrust.org.uk](http://www.felbecktrust.org.uk)

**Leader:** The Felbeck Trust

**Location:** Sustead Common, NR11 8QZ

**No need to book, just turn-up and join-in**

#### Wild about the Common

**Sunday 14 July, 2 to 5pm**

Take part in a guided walk, join in with a minibeast safari, have a go at dyke dipping, make a bird box and explore the common through our treasure hunt. Lots to do, plenty to see.

**Leader:** Norfolk Wildlife Trust and

Shotesham Conservation Group

**Location:** Shotesham Common, Shotesham, Norfolk, NR15 1YB

**No need to book, just turn-up and join-in**

#### In search of wildflowers

**Sunday 14 July, 3 to 4.30pm**

Join local botanist Stella Taylor and discover some of the flowers that make this common so special.

**Leader:** Stella Taylor, Friends of Boyland Common

**Location:** Boyland Common, Shelfanger

**Booking essential:** phone 01603 598318 or email [wild@norfolkwildlifetrust.org.uk](mailto:wild@norfolkwildlifetrust.org.uk)

### JUST ONE MORE...

## Wednesday 17 July

#### Help the animals – guided walk and litter pick

**Wednesday 17 July, 9.30 to 11.15am**

Come and find out how Thetford Town Council are managing Barnham Cross Common which is a nationally important Site of Special Scientific Interest. Find out about the history of the common and the Breckland Pine Lines. We may make you litter pick the site as we walk around!

**Leader:** Thetford Town Council

**Meeting point:** Barnham Cross Common Car park, Bury Road, Thetford, Norfolk, IP24 3EB

**No need to book, just turn-up and join in**

# Your local common Photographic competition

Our second Wildlife in Common photographic competition is open to all to submit wildlife or landscape pictures taken on Norfolk's wonderful commons. Once again prizes have been provided by generous sponsors and NWT Investor in Wildlife members Jessops and Cley Spy, and include binoculars, canvases and prints and the latest digiscoping equipment. For full details of the competition visit [www.norfolkwildlifetrust.org.uk](http://www.norfolkwildlifetrust.org.uk). Runs 1-31 July 2019.

**JESSOPS** **CleySpy**

Wild in the Orchids  
by Julie Smart (2018 Winner)



Saving **Norfolk's Wildlife** for the Future